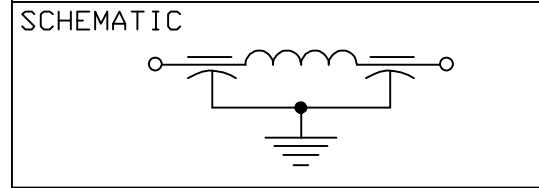


LEAD FINISH: SOLDER	
EYELET FINISH: SOLDER	
CAPACITANCE	1500pF GMV
TEMP. RANGE	-55°C TO 125°C
CURRENT	10AMP MAX.
WORKING VOLTAGE	85°C 350VDC MAX. 125°C 200VDC MAX.
D.C. RESISTANCE	.01ohms MAX.
MIN. I.L. PER MIL-STD-220 AT 25°C NO LOAD	
FREQ. MHz	I.L. (db)
1	--
10	5
100	45
1 GHz	70
10 GHz	--



MARKING: PART: NONE
 BAG: 1203-050
 DATE CODE
 QTY./BAG (200 MAX.)

NOTES:
 1. SUGGESTED MOUNTING HOLE = ϕ .160

CN.184999	3	REV. 1	TOLERANCES UNLESS OTHERWISE SPECIFIED	ERIE, FAIRVIEW PENNSYLVANIA
			Fract. $\pm 1/64$	
CHANGE NOTICE NO.	CN.184999	REV. 1	Dec. .xx±	DwnKAUFFMAN
			Dec. .xxx±0.10	
CHANGE NOTICE NO.	CN.184999	REV. 1	Angles $\pm 0^{\circ} 30'$	Description
			CODE IDENT. NO. 0LSP2	
			Scale NONE	

PI SOLDER-IN FILTER